



LIVE PERFORMANCES / BROADCAST & FILM / BUSINESS & EDUCATION

evolution wireless G4

Evolving with you.

SENNHEISER





Evolving with you.

“Whether you’re in the corporate world, live entertainment, theater or broadcast, I really think it helps when you know your gear – evolution wireless G4 does that for you. Only when you know your gear you know what is possible. And with the right gear – anything is possible.”

Raphael Williams, Sound Engineer

Stop dreaming about flexibility, stop wishing for a higher bandwidth, for more power. G4 has it. G4 takes you wherever you want to go. G4 is a wireless system that simply evolves with your passion, with your audience, with you.

Evolution wireless users have come to expect an ever-evolving feature set with each new generation, and evolution wireless G4 is no exception.

With a sleek new user interface, a generously expanded switching bandwidth and higher RF output power for the 300 and 500 series, new multi-channel functionality for the 100 series and brand-new on-camera systems, G4 delivers high-quality, reliable audio for musical performances, houses of worship, theaters, business settings and camera work.

evolution wireless G4 – Evolving with you.



More flexibility.

Versatility is key. G4 offers the highest amount of flexibility for all possible applications. Live Sound, In-Ear Monitoring, portable solutions for ENG and professional film productions. It is your partner on every congress, meeting or university lecture. G4 is mobile. G4 is always on air.



Mobility.

When it comes to hospitality, education and events, G4 is your mobile solution that fits easily into every room and workflow.

When on the road, documentarists and film-makers know that G4 fits into every pocket and provides powerful speech intelligibility during the whole interview.



Integration.

The LSP 500 Pro is your mobile wireless speaker joining you on every job, a broad range of accessories completes the system, and integrators adore its versatility when it comes to workflow and control software such as WSM (Wireless Systems Manager) and the Sennheiser Control Cockpit on mobile devices.

evolution wireless - The story continues.

G4 addresses the broad base of the wireless market that relies on analogue transmission in the professional UHF band. G4 benefits from sixty years of expertise in analogue wireless design, bringing its users a maximum of features, reliability and user-friendliness.

G4 is fully compatible with all G1, G2 and G3 systems, ensuring investments continue to be viable and pay off well into the future. With many user-driven improvements and new features, G4 will continue this legacy.

More power.

Stop dreaming about power. G4 has it. The IEM, 300 and 500 series offer up to 50 mW RF output power (adjustable in 3 steps: 10/30/50). Portable Broadcast & Film sets benefit from 8 hours battery power. G4 is a reliable partner on every set.



More bandwidth.

G4 is beyond expectations on its price point. A switching bandwidth of up to 88 MHz (300 and 500 series) literally enables you to go everywhere your job takes you.



Quicker setup.

G4's 100 Series enables you to link up to 12 receivers for simultaneous easy-setup, saving valuable time. G4's intuitive LCD and OLED (IEM, 300 and 500 Series) displays make lives easier in every environment.



Content.

Live Performances	100 Series, 500 Series and IEM Series	pages 06–11
Broadcast & Film	100P Series, 500P Series	pages 14–19
Business & Education	300 Series	pages 20–23

For all additional system components, accessories, and software solutions, please visit us at www.sennheiser.com/g4





Live Performances G4 is where the magic is.

On a live stage in your favorite venue or at major festivals. In houses of worship, and in the theater.

Sound engineers and avid users love its flexibility and versatility – whereas more casual users will adore how easy it is to setup, allowing them to fully concentrate on their major goal; connecting with their audience.

- > 100 Series (Easy to operate pro wireless)
- > IEM Series (InEar Monitoring)
- > 500 Series (Multi-Channel Setups)

100 Series



evolution wireless G4 - 100 Series

Evolving with you: Flexibility, Safety, Power.

Evolution wireless G4 100 Series is a versatile wireless systems for those who sing, speak or play instruments with up to 42 MHz tuning bandwidth in a stable UHF range and fast, simultaneous setup of up to 12 linked systems.

- > True diversity half-rack receiver in a full-metal housing with intuitive LCD display for full control
- > Easy and flexible wireless synchronization between transmitter and receiver via infrared
- > Fast frequency allocation for up to 12 receivers via new linking functionality
- > Up to 20 compatible channels
- > Up to 42 MHz bandwidth with 1680 selectable frequencies, fully tunable in a stable UHF range
- > Transmission Range: up to 100 meters / 330 feet
- > High RF output power (up to 30 mW) depending on country regulations
- > All sets now come with GA 3 rackmount kit included

Vocal Sets

ew 100 G4-835 / 845 / 865 / 935 / 945 -S

State-of-the-art live sound featuring Sennheiser's renowned e 835, e 845, e 865, e 935, and e 945 capsules on a lightweight aluminum transmitter with integrated mute switch.



Instrument Set

ew 100 G4-Ci1

Engineered for professional live sound: Rugged all-in-one wireless system for guitar and bass. Robust bodypack transmitter and Ci1 instrument cable for daily use on stage.



Headmic Set

ew 100 G4-ME3

For hands-free operation during performances and speeches. Robust bodypack transmitter and feedback resistant headmic ME 3-II with high speech intelligibility for daily use on stage.



Lavalier Mic Set

ew 100 G4-ME2 / ME4

For moderators and presenters. Robust bodypack transmitter and clip-on microphone ME 2-II (omni-directional) or ME 4 (cardioid) with high speech intelligibility for easy hands-free operation.



Combo Set

ew 100 G4-ME2/835-S

Dynamic handheld microphone e 835, robust bodypack transmitter and easy clip-on microphone ME 2-II (omni-directional) with high speech intelligibility for daily use on stage.



500 Series



evolution wireless G4 - 500 Series

Evolving with you: Flexibility, Bandwidth, Control.

The pro's choice. Renowned sound engineers rely on ew 500 G4's flexibility, especially when handling multi-channel settings on the world's music stages. Up to 88 MHz bandwidth, up to 32 channels. Ethernet connection for Wireless Systems Manager (WSM) control software included for advanced frequency coordination in multi-channel setups.

- > True diversity half-rack receiver in a full-metal housing with intuitive OLED display for full control
- > Easy and flexible wireless synchronization between transmitter and receiver via infrared
- > Up to 32 compatible channels
- > Up to 88 MHz bandwidth with 3520 selectable frequencies, fully tunable in a stable UHF range
- > Ethernet connection for Wireless Systems Manager (WSM) control software for advanced frequency coordination in multi-channel setups
- > High RF output power (up to 50 mW, adjustable in three steps 10/30/50) depending on country regulations

Fully connected.

Powerful receiver (back)

EM 500 G4



In full control.

Microphone (back)

SKM 500 G4



Vocal Sets

ew 500 G4-935 / 945 / 965

The pinnacle of the evolution series, e900 capsules e 935, e 945, and e 965 on a lightweight black aluminum handheld transmitter, ready to take the world's biggest live stages.



Instrument Set

ew 500 G4-Ci1

For perfectly balanced but upfront guitar and bass. Powerful bodypack transmitter and Ci1 instrument cable for unforgettable performances.



Lavalier Mic Set

ew 500 G4-MKE2

For impressive presentations. The professional MKE 2 Gold omni-directional condenser microphone resists the test of time on any big live stage and ensures a high speech intelligibility.



IEM Series



evolution wireless G4 - IEM Series

Evolving with you: Flexibility, Safety, Control.

Full control over your performance – your direct link, everywhere, everyday. The G4 In-Ear Monitoring Sets make your gig an extraordinary experience – not just for your audience, but also for you.

- > Half-rack stereo transmitter in an all-metal housing with OLED display for full control
- > Improved, easier and faster wireless synchronization between transmitter and receiver via infrared, new backlit IR area makes it more obvious where to hold the components for fast sync
- > Up to 16 compatible channels
- > Up to 42 MHz bandwidth, 1680 selectable frequencies, tunable in a stable UHF range
- > Compatible with Sennheiser WSM control software for flexible frequency allocation
- > Ethernet connection for Wireless Systems Manager (WSM) control software for advanced frequency coordination in multi-channel setups
- > Transmission Range: up to 100 meters / 330 feet
- > High RF output power (up to 50 mW, adjustable in 3 steps – 10/30/50) depending on country regulations



Fully connected.
Stereo transmitter (back)
SR IEM G4



In full control.
Monitoring headphones
IE 4

Monitoring Set

ew IEM G4

Robust bodypack receiver and reliable in-ear monitoring IE 4 headphones delivering clarity along the whole frequency spectrum for daily use on stage.

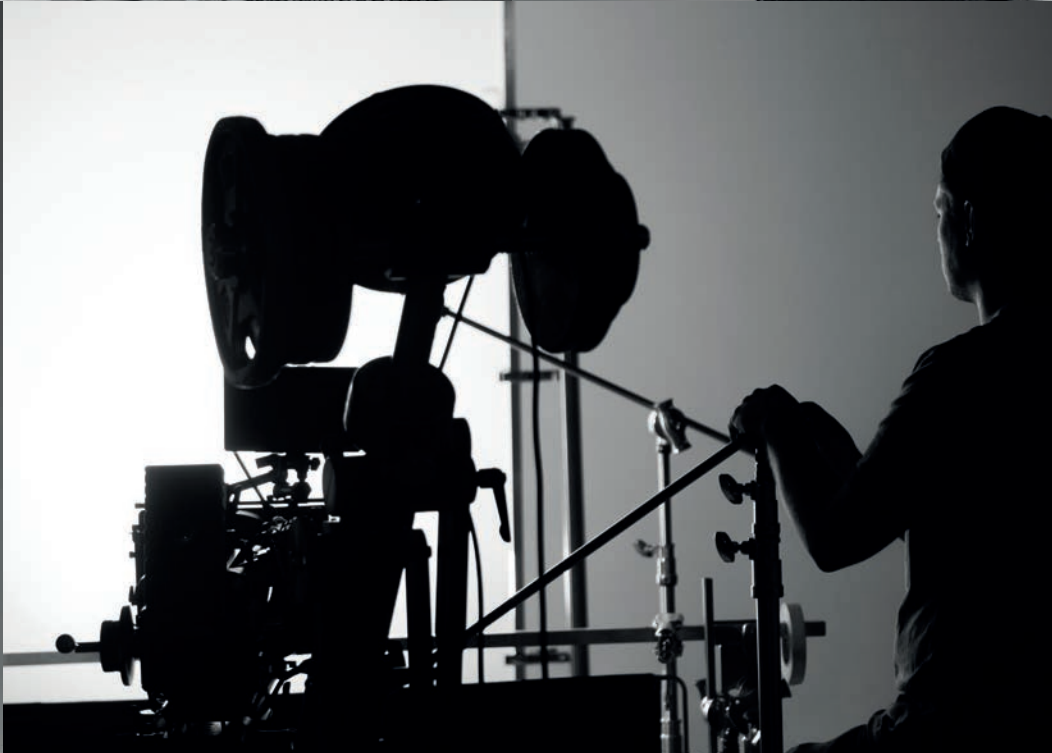


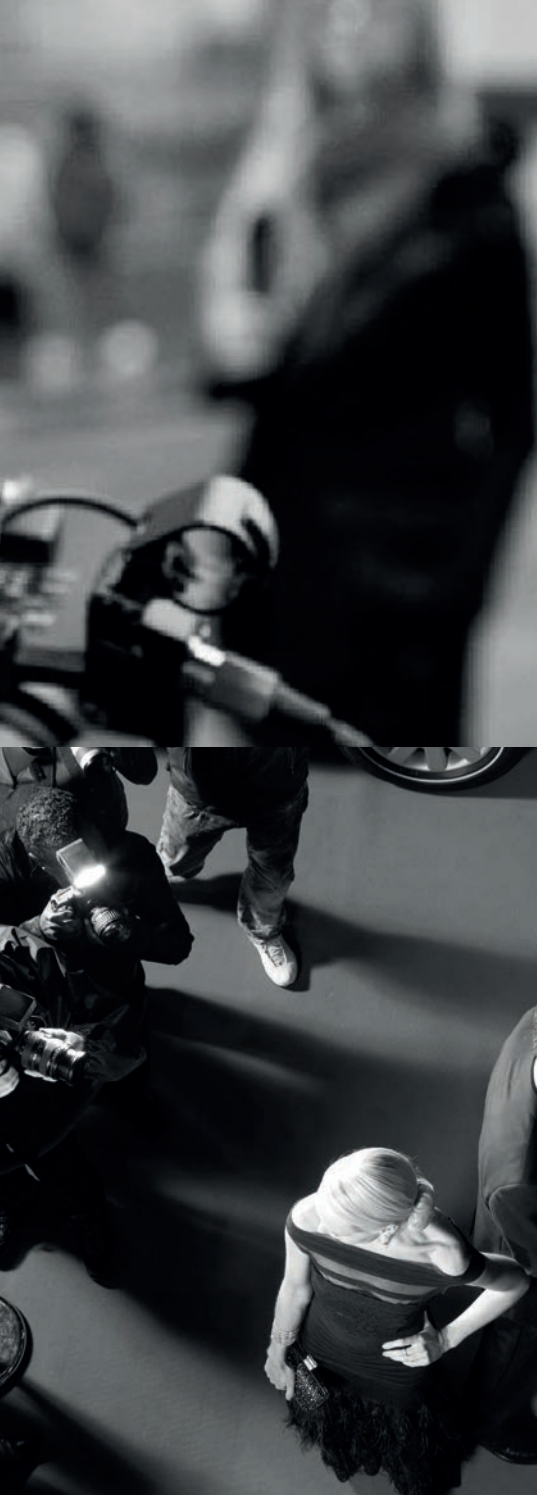
TWIN Monitoring Set

ew IEM G4-twin

Double up: the dual channel solution. Robust bodypack receiver (2x) and reliable in-ear monitoring IE 4 headphones (2x) for flexible use on any stage.







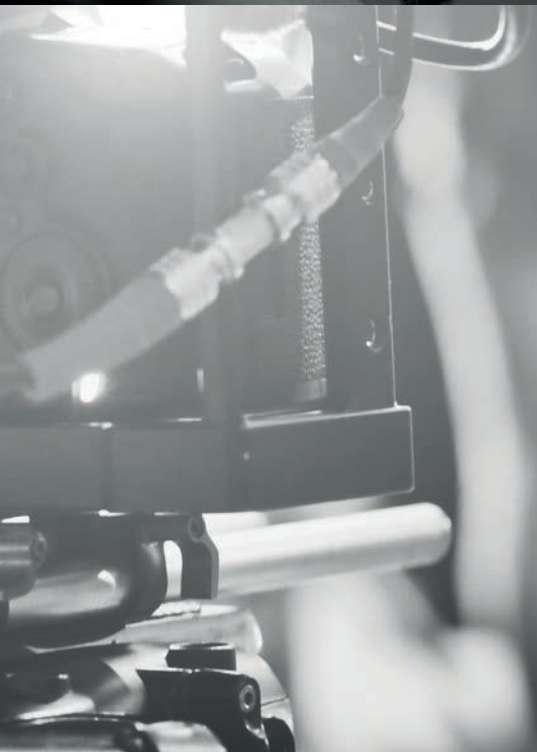
Broadcast & Film

G4 is where there's no second take.

In the streets while shooting a documentary or on the red carpet for an interview. On a large film set or in a production studio.

G4 captures the magic with such ease, almost as if you had planned it for years. As the most simple mobile solution and a reliable partner on every set, evolution wireless has become the leading choice amongst film-makers and journalists alike for its ease of use, versatility and reliability.

- > 100P Series (Mobile Journalism, ENG, Documentary)
- > NEW 500P Series (Professional Film)



100P Series



evolution wireless G4 - 100P Series

Evolving with you: Flexibility, Ease of use, Power.

A broadcast quality sound solution. Providing the highest flexibility for your video sound and field recording applications. A robust wireless microphone system that offers excellent sound quality, simple mounting and ease of use.

- > Rugged all-in-one wireless systems with high flexibility for broadcast quality sound
- > Excellent sound and construction quality
- > Exceptional easy to use and fast setup time
- > Powerful and reliable wireless transmission
- > Transmission Range: up to 100 meters / 330 feet
- > Up to 8 hours of operation time

Turns every wired mic into
a handheld transmitter:

SKP 100 G4



Fits on every camera:
CA2 hotshoe adapter
for EK 100 G4



Portable Lavalier Mic Sets

ew 112P G4 / 122P G4

Rugged all-in-one wireless system with high flexibility for broadcast quality sound, including the clip-on microphone ME 2-II (omni-directional) or ME 4 (cardioid) for excellent speech intelligibility.



Portable ENG Combo Set

ew 100 ENG G4

Multi-purpose set for mobile journalism and documentary. Powerful plug-on transmitter SKP 100 and the ME 2-II (omni-directional) clip-on microphone offer excellent speech intelligibility during interviews.



Portable Handheld Mic Set

ew 135P G4

The easiest wireless solution for moderators or reporters. The rugged e 835 microphone resists any bad weather or field condition, while the versatile receiver is easily mounted to any camera.



500P Series



evolution wireless G4 - 500P Series

Evolving with you: Flexibility, Bandwidth, Control.

The professional's choice for excellent film sound. The perfect solution for film-makers on large sets, operating up to 32 channels in parallel. The amazing bandwidth of up to 88 MHz and the increased RF output power ensure highest safety, no matter the conditions.

- > Highly versatile
- > Professional film sound and excellent construction quality
- > Easy to use and fast setup time
- > Plug-on-transmitter with phantom power
- > Up to 88 MHz bandwidth, up to 32 channels
- > Increased RF output power (50 mW)
- > Up to 8 hours of operation time



Best in class
film sound:
MKE 2 Gold

Phantom power plug-on
transmitter: SKP 500 G4



Pro Portable Lavalier Mic Set

ew 512P G4

Impressive film sound was never that easily done. The legendary MKE 2 Gold professional clip-on microphone ensures best speech intelligibility, the portable transmitter and receiver are easily mounted and ensure 8 hours of mobile operation.



Pro Portable Film Combo Set

ew 500 FILM G4

Covers all sorts of applications on the set: The 48V phantom-power equipped SKP 500 turns all wired mics into a wireless transmitter, the MKE 2 Gold is a state-of-the-art professional clip-on microphone offering the highest speech intelligibility.



Pro Portable Boom Set

ew 500 BOOM G4

The phantom power-equipped SKP 500 plug-on transmitter adapts any wired shotgun or handheld microphone for a wide range of wireless applications, from field interviews to off-camera boom work.







Business & Education

Let your word make a difference with G4.

Be it a congress, a summit or an important meeting: G4 is your mobile solution whenever you speak up for making a difference. G4 ensures your vision to reach the final rows, indoors and outdoors.

G4 wireless technology is your reliable partner in inspiring your audience. It helps you to fully focus on your message.

> 300 Series (Corporate, Education,
Hospitality, Government)

300 Series



evolution wireless G4 - 300 Series

Evolving with you: Flexibility, Ease of use, Power.

Best choice for your business, top of the class in education. The G4 300 Series uses the power of an increased switching bandwidth of up to 88 MHz. New frequency ranges allow to operate multi-channel setups with dozens of channels while securing reliable operation - despite digital dividend.

- > Easy to use, fast setup time
- > Integrated network port allows control, monitoring and setup via Sennheiser Control Cockpit and WSM Software
- > Broad range of products and existing accessories (such as microphones) allows usage in any kind of environment
- > Up to 88 MHz bandwidth, up to 32 channels
- > Increased RF output power (10/30/50 mW)
- > Transmission Range: up to 100 meters / 330 feet
- > Compatible with wireless speaker system LSP 500 PRO
- > RC (remote control) switch available for the bodypack transmitter

Vocal Set

ew 300 G4-865-S

Moderators and presenters love working with G4. The aluminum housing of the handheld transmitter is not just robust but also lightweight for long speeches, whereas the noiseless mute switch ensures full control.



Lavalier Mic Set

ew 300 G4-ME2-RC

The powerful clip-on mic package. Easy to operate, reliable while transmitting – G4 does the job. The lavalier mic set ensures hands-free operation even during the longest congress or lecture. Remote mute switch available for the bodypack transmitter.



Headmic Set

ew 300 G4-HEADMIC1-RC

The HEADMIC1 is the pro's choice for lively lectures and speeches. Its high speech intelligibility makes the headset microphone – besides its good look – absolutely reliable. Remote mute switch available for the bodypack transmitter.



Base Set-SKM

ew 300 G4-BASE SKM-S

The best choice if you need a handheld transmitter and maximum flexibility. This base set consists of the stationary receiver as well as a handheld transmitter. Just add your favorite capsule.



Base Set-SK

ew 300 G4-BASE SK-RC

The best choice if you need a bodypack transmitter and maximum flexibility. This base set consists of the stationary receiver as well as a bodypack transmitter. Just add your favorite clip-on or headset microphone.



Base Set Combo

ew 300 G4-BASE COMBO

Bodypack, handheld transmitter and maximum flexibility. This base set consists of the stationary receiver as well as a bodypack and a handheld transmitter. Just add your favorite capsule and clip-on or headmic.



